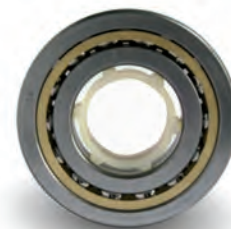
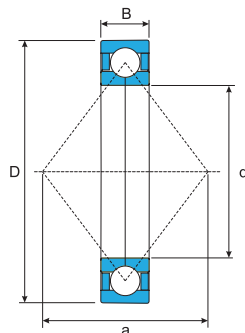


## Four-points contact ball bearings

*Cuscinetti a sfere a quattro punti di contatto*

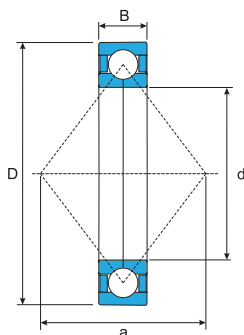
Dimension <i>Dimension</i>			Load rating (KN) <i>Coefficiente di carico (KN)</i>		Speed limit (Rpm) <i>Velocità limite (giri/min)</i>		Weight (kg) <i>Peso (Kg)</i>	a <i>(mm)</i>	Designation <i>Sigla</i>
d <i>(mm)</i>	D <i>(mm)</i>	B <i>(mm)</i>	Dynamic <i>Dinamico</i> C	Static <i>Statico</i> C <sub>0</sub>	Lubrication <i>Lubrificazione</i>				
					Grease <i>Grasso</i>	Oil <i>Olio</i>			
15	35	11	12.5	8.1	27540	32400	0.062	18	<b>QJ 202 M</b>
17	40	12	15.6	10.4	22950	27000	0.082	20	<b>QJ 203 M</b>
	47	14	22.9	14.7	21420	25200	0.14	22	<b>QJ 303 M</b>
20	52	15	31.4	21.2	18360	21600	0.18	25	<b>QJ 304 M</b>
25	52	15	26.5	20.8	16830	19800	0.16	27	<b>QJ 205 M</b>
	62	17	38.2	27.4	15300	18000	0.29	30	<b>QJ 305 M</b>
30	62	16	36.8	29.9	14535	17100	0.24	32	<b>QJ 206 M</b>
	72	19	51.9	40.7	13005	15300	0.42	36	<b>QJ 306 M</b>
35	72	17	48	40.7	13005	15300	0.36	37	<b>QJ 207 M</b>
	80	21	62.7	50.0	11475	13500	0.57	40	<b>QJ 307 M</b>
40	80	18	54.9	48.0	11475	13500	0.45	42	<b>QJ 208 M</b>
	90	23	76.4	62.7	10710	12600	0.78	46	<b>QJ 308 M</b>
45	85	19	61.7	54.9	10710	12600	0.52	46	<b>QJ 209 M</b>
	100	25	98	81	9180	10800	1.05	51	<b>QJ 309 M</b>
50	90	20	64.2	59	9945	11700	0.59	49	<b>QJ 210 M</b>
	110	27	115	98	8415	9900	1.35	56	<b>QJ 310 M</b>
55	100	21	83	81	8415	9900	0.77	54	<b>QJ 211 M</b>
	120	29	135	116	7650	9000	1.75	61	<b>QJ 311 M</b>
60	110	22	95	91	7650	9000	0.99	60	<b>QJ 212 M</b>
	130	31	153	134	6885	8100	2.15	67	<b>QJ 312 M</b>
65	120	23	108	109	7268	8550	1.20	65	<b>QJ 213 M</b>
	140	33	173	152	6503	7650	2.70	72	<b>QJ 313 M</b>
70	125	24	118	119	6885	8100	1.30	68	<b>QJ 214 M</b>
	150	35	196	176	6120	7200	3.15	77	<b>QJ 314 M</b>
75	130	25	123	129	6502	7650	1.45	72	<b>QJ 215 M</b>
	160	37	211	196	5737	6750	3.90	82	<b>QJ 315 M</b>
80	140	26	143	152	6120	7200	1.85	77	<b>QJ 216 M</b>
	170	39	227	223	5355	6300	4.60	88	<b>QJ 316 M</b>
85	150	28	152	169	5737	6750	2.25	83	<b>QJ 217 M</b>
	180	41	245	249	5125	6030	5.45	93	<b>QJ 317 M</b>
90	160	30	182	196	5355	6300	2.75	88	<b>QJ 218 M</b>
	190	43	279	298	4819	5670	6.45	98	<b>QJ 318 M</b>
95	170	32	207	227	5125	6030	3.35	93	<b>QJ 219 M</b>
	200	45	298	333	4590	5400	7.45	103	<b>QJ 319 M</b>
100	180	34	231	259	4819	5670	4.05	98	<b>QJ 220 M</b>
	215	47	338	392	4284	5040	9.30	110	<b>QJ 320 M</b>



## Four-points contact ball bearings

*Cuscinetti a sfere a quattro punti di contatto*

Dimension <i>Dimension</i>			Load rating (KN) <i>Coefficiente di carico (KN)</i>		Speed limit (Rpm) <i>Velocità limite (giri/min)</i>		Weight (kg) <i>Peso (Kg)</i>	a <i>(mm)</i>	Designation <i>Sigla</i>
d <i>(mm)</i>	D <i>(mm)</i>	B <i>(mm)</i>	Dynamic <i>Dinamico</i> C	Static <i>Statico</i> C <sub>0</sub>	Lubrication <i>Lubrificazione</i>				
					Grease <i>Grasso</i>	Oil <i>Olio</i>			
110	170	28	146	140	4500	5300	2.5	98	<b>QJ 1022</b>
	200	38	274	318	4284	5040	5.60	109	<b>QJ 222 M</b>
	240	50	382	470	3672	4320	12.5	123	<b>QJ 322 M</b>
120	215	40	294	357	3825	4500	6.95	117	<b>QJ 224 M</b>
	260	55	406	519	3442	4050	16	133	<b>QJ 324 M</b>
	260	86	377	390	3500	4100	24.0	185	<b>QJ 2324</b>
130	230	40	303	392	3672	4320	7.75	126	<b>QJ 226 M</b>
	280	58	445	597	3060	3600	19.5	144	<b>QJ 326 M</b>
	280	93	416	465	3200	3800	30.5	200	<b>QJ 2326</b>
140	250	42	338	465	3289	3870	9.85	137	<b>QJ 228 M</b>
	300	62	490	681	2907	3420	24	154	<b>QJ 328 M</b>
150	225	35	216	228	3150	3750	5.25	131	<b>QJ 1030</b>
	270	45	392	558	3060	3600	12.5	147	<b>QJ 230 M</b>
	320	65	519	749	2754	3240	29	165	<b>QJ 330 M</b>
160	240	38	247	260	3000	3550	6.45	140	<b>QJ 1032</b>
	290	48	441	656	2907	3420	15.5	158	<b>QJ 232 M</b>
	340	68	558	862	2601	3060	34.5	175	<b>QJ 332 M</b>
170	260	42	286	305	2800	3200	8.60	151	<b>QJ 1034</b>
	310	52	445	705	2601	3060	19.5	168	<b>QJ 234 M</b>
	360	72	641	1019	2448	2880	41.5	186	<b>QJ 334 M</b>
180	280	46	338	380	2720	3100	11.0	161	<b>QJ 1036</b>
	320	52	465	749	2601	3060	20.5	175	<b>QJ 236 M</b>
	380	75	666	999	2295	2700	47.5	196	<b>QJ 336 M</b>
190	290	46	338	380	2250	2700	11.5	168	<b>QJ 1038</b>
	400	78	688	1136	2142	2520	49.0	207	<b>QJ 338 M</b>
200	360	58	529	896	2295	2700	28.5	196	<b>QJ 240 M</b>
	310	51	390	465	2000	2400	15.0	179	<b>QJ 1040</b>
220	340	56	442	560	1500	2000	19.5	196	<b>QJ 1044</b>
	400	78	592	800	1300	1650	45.5	310	<b>QJ 1244</b>
	460	88	780	1140	1200	1500	78.0	238	<b>QJ 344</b>
240	360	56	449	585	1100	1500	21.0	210	<b>QJ 1048</b>
	440	72	650	930	1000	1450	53.0	238	<b>QJ 248</b>
	440	85	663	950	1000	1400	61.0	340	<b>QJ 1248</b>
260	360	46	390	510	1000	1400	15.0	217	<b>QJ 1952 N2</b>
	480	90	741	1120	950	1300	78.5	370	<b>QJ 1252</b>
280	420	65	553	780			33.5	245	<b>QJ 1056</b>
320	480	74	663	1040	800	1150	50.0	280	<b>QJ 1064</b>
	580	105	923	1560	820	1100	130	450	<b>QJ 1264</b>



## Four-points contact ball bearings

*Cuscinetti a sfere a quattro punti di contatto*

Dimension <i>Dimension</i>			Load rating (KN) <i>Coefficiente di carico (KN)</i>		Speed limit (Rpm) <i>Velocità limite (giri/min)</i>		Weight (kg) <i>Peso (Kg)</i>	a <i>(mm)</i>	Designation <i>Sigla</i>
d <i>(mm)</i>	D <i>(mm)</i>	B <i>(mm)</i>	Dynamic <i>Dinamico</i> C	Static <i>Statico</i> C <sub>0</sub>	Lubrication <i>Lubrificazione</i>				
					Grease <i>Grasso</i>	Oil <i>Olio</i>			
<b>340</b>	520	82	780	1290	700	950	67.5	301	<b>QJ 1068</b>
	620	118	1060	1900	650	900	165	408	<b>QJ 1268</b>
<b>360</b>	650	122	1100	2000	650	850	190	505	<b>QJ 1272</b>
<b>380</b>	680	132	1170	2200	600	800	220	530	<b>QJ 1276</b>
<b>440</b>	600	74	761	1370	600	800	65.0	364	<b>QJ 1988</b>
<b>460</b>	680	100	1040	1960	550	750	130	399	<b>QJ 1092</b>

*Bearings & Components*