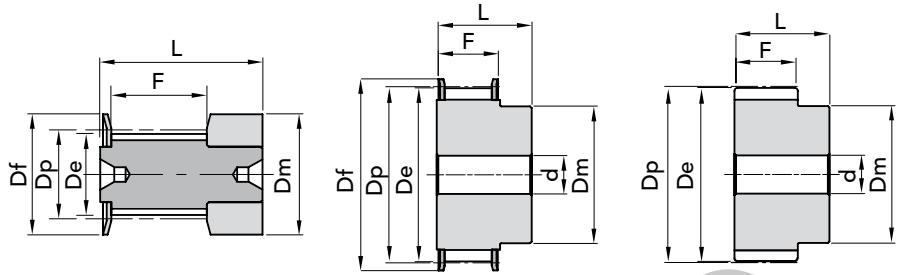


TYPE **3M 09**

EXEC. 0F

EXEC. 1F

EXEC. 8

| TYPE | P. NUMBER | N. TEETH | EXEC. | Dp | De | Df FLANGE | Dm HUB | F | L | d Ø Bore | N. FLANGE | WEIGHT kg. |
|-------------|-----------|----------|-------|-------|-------|-----------|--------|------|------|----------|-----------|------------|
| 10- 3M- 09F | 40109010 | 10 | 0F | 9,55 | 8,79 | 13 | 13 | 10,2 | 17,5 | - | 501 | 0,01 |
| 12- 3M- 09F | 40109012 | 12 | 0F | 11,46 | 10,70 | 15 | 15 | 10,2 | 17,5 | - | 502 | 0,01 |
| 14- 3M- 09F | 40109014 | 14 | 0F | 13,37 | 12,61 | 16 | 16 | 10,2 | 17,5 | - | 503 | 0,01 |
| 15- 3M- 09F | 40109015 | 15 | 0F | 14,32 | 13,56 | 17,5 | 17,5 | 10,2 | 17,5 | - | 516 | 0,01 |
| 16- 3M- 09F | 40109016 | 16 | 1F | 15,28 | 14,52 | 17,5 | 10 | 12,8 | 20,6 | 4 | 504 | 0,01 |
| 18- 3M- 09F | 40109018 | 18 | 1F | 17,19 | 16,43 | 20 | 11 | 12,8 | 20,6 | 6 | 505 | 0,01 |
| 20- 3M- 09F | 40109020 | 20 | 1F | 19,10 | 18,34 | 23 | 13 | 12,8 | 20,6 | 6 | 517 | 0,01 |
| 21- 3M- 09F | 40109021 | 21 | 1F | 20,05 | 19,29 | 25 | 13 | 12,8 | 20,6 | 6 | 518 | 0,01 |
| 22- 3M- 09F | 40109022 | 22 | 1F | 21,01 | 20,25 | 25 | 13 | 12,8 | 20,6 | 6 | 518 | 0,01 |
| 24- 3M- 09F | 40109024 | 24 | 1F | 22,92 | 22,16 | 25 | 13 | 12,8 | 20,6 | 6 | 518 | 0,02 |
| 26- 3M- 09F | 40109026 | 26 | 1F | 24,83 | 24,07 | 28 | 16 | 12,8 | 20,6 | 6 | 508 | 0,02 |
| 28- 3M- 09F | 40109028 | 28 | 1F | 26,74 | 25,98 | 32 | 18 | 12,8 | 20,6 | 6 | 509 | 0,02 |
| 30- 3M- 09F | 40109030 | 30 | 1F | 28,65 | 27,89 | 32 | 20 | 12,8 | 20,6 | 6 | 509 | 0,30 |
| 32- 3M- 09F | 40109032 | 32 | 1F | 30,56 | 29,80 | 36 | 22 | 12,8 | 20,6 | 6 | 510 | 0,30 |
| 36- 3M- 09F | 40109036 | 36 | 1F | 34,38 | 33,62 | 39 | 26 | 13,4 | 22,2 | 6 | 519 | 0,05 |
| 40- 3M- 09F | 40109040 | 40 | 1F | 38,20 | 37,44 | 42 | 28 | 13,4 | 22,2 | 6 | 513 | 0,06 |
| 44- 3M- 09F | 40109044 | 44 | 1F | 42,02 | 41,26 | 48 | 33 | 13,4 | 22,2 | 6 | 520 | 0,07 |
| 48- 3M- 09 | 40109048 | 48 | 8 | 45,84 | 45,08 | - | 33 | 13,4 | 22,2 | 8 | - | 0,11 |
| 60- 3M- 09 | 40109060 | 60 | 8 | 57,30 | 56,54 | - | 33 | 13,4 | 22,2 | 8 | - | 0,11 |
| 72- 3M- 09 | 40109072 | 72 | 8 | 68,75 | 67,99 | - | 33 | 13,4 | 22,2 | 8 | - | 0,15 |

MATERIAL **ALUMINIUM**

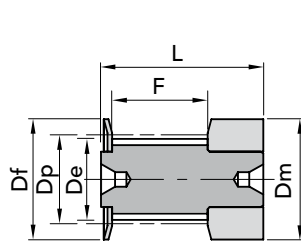
CAD drawings available on our site

Quantity, availability and prices

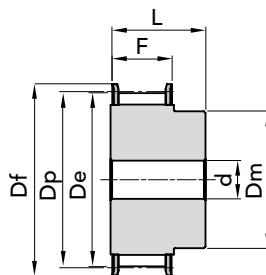




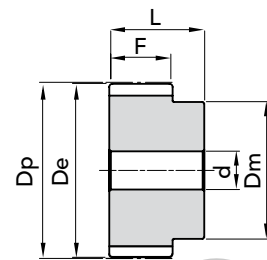
TYPE 3M 15



EXEC. 0F



EXEC. 1F



EXEC. 8

| TYPE | P. NUMBER | N. TEETH | EXEC. | Dp | De | Df FLANGE | Dm HUB | F | L | d Ø Bore | N. FLANGE | WEIGHT kg. |
|-------------|-----------|----------|-------|-------|-------|-----------|--------|------|----|----------|-----------|------------|
| 10- 3M- 15F | 40115010 | 10 | 0F | 9,55 | 8,79 | 13 | 13 | 17 | 26 | - | 501 | 0,01 |
| 12- 3M- 15F | 40115012 | 12 | 0F | 11,46 | 10,70 | 15 | 15 | 17 | 26 | - | 502 | 0,01 |
| 14- 3M- 15F | 40115014 | 14 | 0F | 13,37 | 12,61 | 16 | 16 | 17 | 26 | - | 503 | 0,01 |
| 15- 3M- 15F | 40115015 | 15 | 0F | 14,32 | 13,56 | 17,5 | 17,5 | 17 | 26 | - | 516 | 0,01 |
| 16- 3M- 15F | 40115016 | 16 | 1F | 15,28 | 14,52 | 17,5 | 10 | 19,5 | 26 | 4 | 504 | 0,01 |
| 18- 3M- 15F | 40115018 | 18 | 1F | 17,19 | 16,43 | 20 | 11 | 19,5 | 26 | 6 | 505 | 0,01 |
| 20- 3M- 15F | 40115020 | 20 | 1F | 19,10 | 18,34 | 23 | 13 | 19,5 | 26 | 6 | 517 | 0,01 |
| 21- 3M- 15F | 40115021 | 21 | 1F | 20,05 | 19,29 | 25 | 13 | 19,5 | 26 | 6 | 518 | 0,02 |
| 22- 3M- 15F | 40115022 | 22 | 1F | 21,01 | 20,25 | 25 | 13 | 19,5 | 26 | 6 | 518 | 0,02 |
| 24- 3M- 15F | 40115024 | 24 | 1F | 22,92 | 22,16 | 25 | 13 | 19,5 | 26 | 6 | 518 | 0,02 |
| 26- 3M- 15F | 40115026 | 26 | 1F | 24,83 | 24,07 | 28 | 16 | 19,5 | 26 | 6 | 508 | 0,03 |
| 28- 3M- 15F | 40115028 | 28 | 1F | 26,74 | 25,98 | 32 | 18 | 19,5 | 26 | 6 | 509 | 0,03 |
| 30- 3M- 15F | 40115030 | 30 | 1F | 28,65 | 27,89 | 32 | 20 | 19,5 | 26 | 6 | 509 | 0,04 |
| 32- 3M- 15F | 40115032 | 32 | 1F | 30,56 | 29,80 | 36 | 22 | 19,5 | 26 | 6 | 510 | 0,04 |
| 36- 3M- 15F | 40115036 | 36 | 1F | 34,38 | 33,62 | 39 | 26 | 20 | 30 | 6 | 519 | 0,06 |
| 40- 3M- 15F | 40115040 | 40 | 1F | 38,20 | 37,44 | 42 | 28 | 20 | 30 | 6 | 513 | 0,08 |
| 44-3M- 15 | 40115044 | 44 | 1F | 42,02 | 41,26 | 48 | 33 | 20 | 30 | 6 | 520 | 0,10 |
| 48- 3M- 15 | 40115048 | 48 | 8 | 45,84 | 45,08 | - | 33 | 20 | 30 | 8 | - | 0,10 |
| 60- 3M- 15 | 40115060 | 60 | 8 | 57,30 | 56,54 | - | 33 | 20 | 30 | 8 | - | 0,15 |
| 72- 3M- 15 | 40115072 | 72 | 8 | 68,75 | 67,99 | - | 33 | 20 | 30 | 8 | - | 0,21 |

MATERIAL ALUMINIUM

CAD drawings available on our site

Quantity, availability and prices



The images do not identify the products.

