

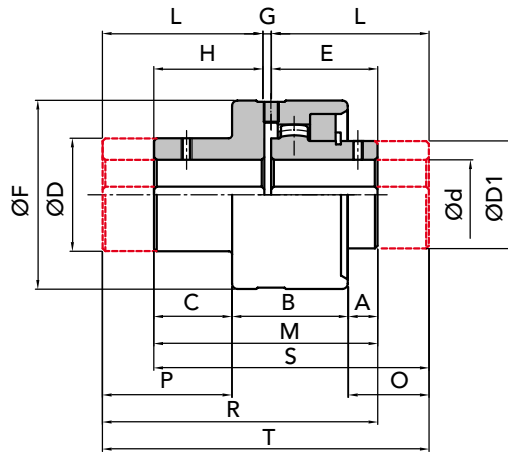


CONE IN STEEL

INTERPRETATION CODES

- Example
GFAS 25-NN with cone and a normal hub
GFAS 25-NL with cone and a long hub
GFAS 25-LL with long cone and a long hub
GFAS 25-LN with long cone and a normal hub

The characteristic size of the coupling is defined by the maximum diameter bore.



PART NUMBERS FOR COMPLETE COUPLING

PART NUMBERS FOR SIMPLE COMPONENTS

| COUPLING TYPE | P.NUMBER GFAS NN | P.NUMBER GFAS NL | P.NUMBER GFAS LN | P.NUMBER GFAS LL | CONE NORMAL | CONE LONG | HUB NORMAL | HUB LONG | COMPONENTS to assembled coupling |
|---------------|------------------|------------------|------------------|------------------|-------------|-----------|------------|----------|----------------------------------|
| GFAS 25 | 00302502 | 00302500 | 00302506 | 00302504 | 00302510 | 00302511 | 00302520 | 00302540 | 00302560 |
| GFAS 32 | 00303202 | 00303200 | 00303206 | 00303204 | 00303210 | 00302511 | 00303220 | 00303240 | 00303260 |
| GFAS 40 | 00304002 | 00304000 | 00304006 | 00304004 | 00304010 | 00304011 | 00304020 | 00304040 | 00304060 |
| GFAS 56 | 00305602 | 00305600 | 00305606 | 00305604 | 00305610 | 00305611 | 00305620 | 00305640 | 00305660 |
| GFAS 63 | 00306302 | 00306300 | 00306306 | 00306304 | 00306310 | 00306311 | 00306320 | 00306340 | 00306360 |
| GFAS 80 | 00308002 | 00308000 | 00308006 | 00308004 | 00308010 | 00308011 | 00308020 | 00308040 | 00308060 |
| GFAS 100 | 00310002 | 00310000 | 00310006 | 00310004 | 00310010 | 00310011 | 00310020 | 00310040 | 00310060 |

MEASUREMENTS - WEIGHTS

| COUPLING TYPE | without bore | | Ød finished bore | | measures in mm | | | | | | | | | | | | | | | Kg | | | | |
|---------------|--------------|-----|------------------|------|----------------|----|-----|-----|------|-----|----|------|-----|-------|-------------|-------|-------|-------|-------|-------------|------------|-----------|----------|-------|
| | min | max | min | max | normal series | | | | | | | | | | long series | | | | | normal bell | normal HUB | long bell | long HUB | |
| | | | | | A | B | C | ØD | ØD1 | E | ØF | G | H | M | I | L | O | P | R | | | | | S |
| GFAS 25 | - | 25 | 28 | 13 | 43 | 29 | 42 | 40 | 41 | 70 | 3 | 41 | 85 | 60 | 60 | 32 | 48 | 104 | 104 | 123 | 1,03 | 0,48 | 1,30 | 0,69 |
| GFAS 32 | - | 32 | 38 | 16 | 49 | 35 | 55 | 55 | 48,5 | 85 | 3 | 48,5 | 100 | 80 | 80 | 47,5 | 66,5 | 131,5 | 131,5 | 163 | 1,75 | 0,99 | 2,50 | 1,58 |
| GFAS 40 | - | 40 | 48 | 18,5 | 54,5 | 42 | 64 | 64 | 56 | 95 | 3 | 56 | 115 | 80 | 80 | 42,5 | 66 | 139 | 139 | 163 | 2,71 | 1,49 | 3,40 | 2,10 |
| GFAS 56 | - | 56 | 60 | 27 | 60 | 45 | 80 | 80 | 68 | 120 | 4 | 60 | 132 | 100 | 100 | 59 | 85 | 172 | 164 | 204 | 4,43 | 2,96 | 6,10 | 4,22 |
| GFAS 63 | - | 63 | 75 | 31 | 63 | 46 | 100 | 100 | 74,5 | 140 | 4 | 61,5 | 140 | 119,5 | 119,5 | 76 | 104 | 198 | 185 | 243 | 6,62 | 4,90 | 10,20 | 7,67 |
| GFAS 80 | - | 80 | 90 | 26 | 76 | 51 | 125 | 125 | 82,5 | 175 | 5 | 65,5 | 153 | 138 | 140 | 83,5 | 123,5 | 225,5 | 210,5 | 283 | 10,50 | 8,68 | 17,90 | 14,22 |
| GFAS 100 | - | 100 | 110 | 38 | 92 | 71 | 150 | 150 | 105 | 198 | 6 | 90 | 201 | 162 | 174,5 | 107,5 | 143 | 273 | 270,5 | 342,5 | 28,2 | 15,70 | 38,1 | 25,30 |

GFAS NN

GFAS NL

GFAS LL

GFAS LN



IMPORTANT

The GFAS couplings can be ordered complete or for single items.



CAD drawings available on our site

Quantity, availability and prices

